



VAN DRAWERS

Durable storage compartments,
designed for quick and easy access.



TOUGH

Aluminum drawers are backed by a 10 year warranty.



QUICK

Easy to use slam latch.



SECURE

Keyed lock to guard valuables.

VAN DRAWERS

AXESS TRAYS P. 166
COMPACT DRAWERS P. 173
DRAWER CABINETS P. 171
TOOL DRAWERS P. 168

Ranger Design manufactures a variety of tough, quiet drawer systems and storage modules.

We use top quality components such as full-extension, high-capacity ball-bearing drawer slides, secure locks, and Ranger Design's unique braided stainless steel cable-pull handles.

These drawers are the organizational quality that you deserve.

If you never again want to experience the frustration of drawers that jam, sag, and don't latch properly, we have the solution.



VAN DRAWERS – AXESS TRAY

AXESS TRAYS



5032-0

Axess Tray with 1 shelf / no drawers

Aluminum

38" D x 44" W x 30" H

–

52 lbs

0.9 hr

No



5032-1

Axess Tray with 1 shelf / 1 drawer

Aluminum

38" D x 44" W x 30" H

200 lbs

86 lbs

1 hr

Yes



5032-2

Axess Tray with 1 shelf / 2 drawers

Aluminum

38" D x 44" W x 30" H

200 lbs

120 lbs

1.1 hrs

No



5032-3

Axess Tray with 1 shelf / 3 drawers

Aluminum

38" D x 44" W x 30" H

200 lbs

154 lbs

1.2 hrs

No



5032-A

Axess Tray drawer only, complete with slides

Aluminum

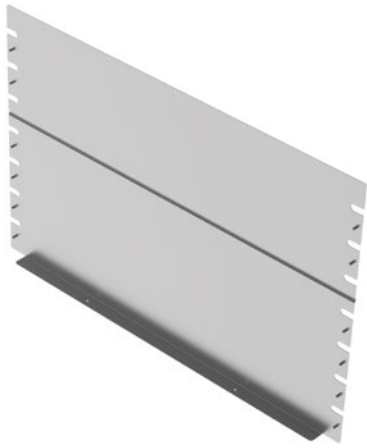
38.75" D x 41.75" W x 4.25" H

–

34 lbs

–

No



5032-F

Axess Tray full back panel for 5032 series

Aluminum

41" W x 27.25" H

—

7 lbs

0.25 hr

No



5037-0

Axess Tray with 1 shelf / no drawers

Aluminum

38" D x 44" W x 42" H

—

60 lbs

1 hr

No



5037-1

Axess Tray with 1 shelf / 1 drawer

Aluminum

38" D x 44" W x 42" H

200 lbs

93 lbs

1.1 hrs

No



5037-2

Axess Tray with 1 shelf / 2 drawers

Aluminum

38" D x 44" W x 42" H

200 lbs

127 lbs

1.2 hrs

No



5037-3

Axess Tray with 1 shelf / 3 drawers

Aluminum

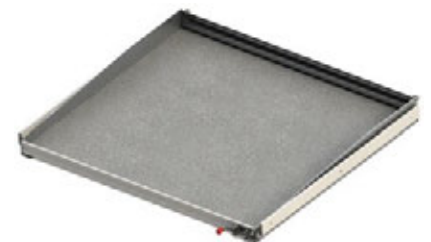
38" D x 44" W x 42" H

200 lbs

161 lbs

1.3 hrs

No



5037-A

Axess Tray drawer only, complete with slides

Aluminum

38" D x 41.75" W x 4.25" H

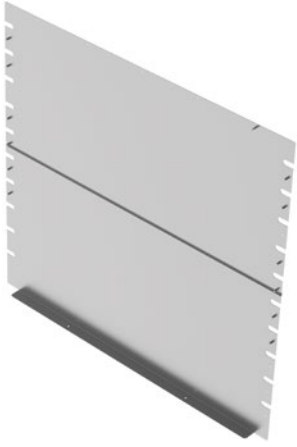
—

34 lbs

—

No

VAN DRAWERS – TOOL DRAWERS



5037-F

Axess Tray full back panel for 5037 series

Aluminum

41" W x 39.25" H

–

10 lbs

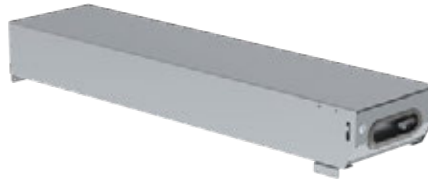
0.25 hr

No



VAN DRAWERS

TOOL DRAWERS



5010

Partslider drawer

Aluminum

48" D x 12" W x 6" H

150 lbs

25 lbs

0.5 hr

Yes



5011

Partslider drawer

Aluminum

36" D x 12" W x 6" H

150 lbs

20 lbs

0.5 hr

No



5014

Floor mount kit for 5010 / 5011 Partslider drawer

Aluminum

12" W x 1" H

—

1.5 lbs

—

Yes



5020

Tool drawer

Aluminum

48" D x 14" W x 16" H

320 lbs

70 lbs

1 hr

Yes



5021

Tool drawer

Aluminum

36" D x 14" W x 16" H

320 lbs

61 lbs

1 hr

No



5025

Jumbo tool drawer

Aluminum

48" D x 16" W x 19.5" H

320 lbs

83 lbs

1 hr

Yes



5026

Jumbo tool drawer

Aluminum

36" D x 16" W x 19.5" H

320 lbs

72 lbs

1 hr

No



5028

Raised base for 5020 tool drawer

Aluminum

4" D x 14" W x 6" H

—

5 lbs

0.5 hr

No

VAN DRAWERS – TOOL DRAWERS



5048

Top edge, for 5010 Partslider

Aluminum

48" D x 12" W x 4" H

—

6.2 lbs

0.2 hr

Yes



5049

Top edge, for 5020 Tool Drawer

Aluminum

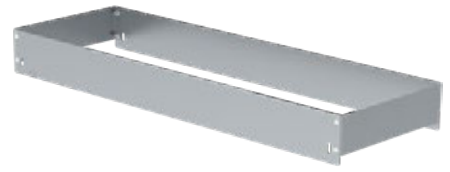
48" D x 14" W x 4" H

—

6.2 lbs

0.2 hr

No



5050

Top edge, for 5025 jumbo Tool Drawer

Aluminum

48" D x 16" W x 4" H

—

6.5 lbs

0.2 hr

No



5051

Top edge, for 5011 Partslider

Aluminum

36" D x 12" W x 4" H

—

5 lbs

0.2 hr

No



5052

Top edge, for 5021 Tool Drawer

Aluminum

36" D x 14" W x 4" H

—

5 lbs

0.2 hr

No



5053

Top edge, for 5026 jumbo Tool Drawer

Aluminum

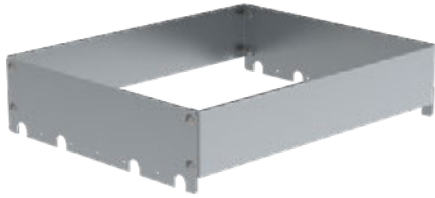
36" D x 16" W x 4" H

—

5.5 lbs

0.2 hr

No



5057

Top edge, for 5060 Drawer Cabinet

Aluminum

18" D x 22" W x 4" H

—

4 lbs

0.2 hr

No



5020 Tool drawer mounted with a 5010 partslider drawer and a 5048 top edge

DRAWER CABINETS



5060-5

5 Drawer cabinet with a door

Aluminum

18" D x 24" W x 36" H

150 lbs/drawer

160 lbs

1 hr

Yes



5060-6

6 Drawer cabinet

Aluminum

18" D x 24" W x 36" H

150 lbs/drawer

183 lbs

1 hr

Yes

VAN DRAWERS – DRAWER CABINETS



5060-8

8 Drawer cabinet

Aluminum

18" D x 24" W x 36" H

150 lbs/drawer

225 lbs

1 hr

No



5065-8

8 Drawer cabinet, square back

Aluminum

19" D x 24" W x 56" H

150 lbs/drawer

247 lbs

1 hr

Yes



5066-8

8 Drawer cabinet, contoured

Aluminum

20" D x 24" W x 56" H

150 lbs/drawer

250 lbs

1 hr

Yes



5067-6

6 Drawer cabinet

Aluminum

18" D x 18" W x 28" H

150 lbs/drawer

156 lbs

0.5 hr

Yes



COMPACT DRAWERS



5068-3
3 Drawer cabinet

Aluminum

18" D x 15" W x 15" H

150 lbs/drawer

75 lbs

0.5 hr

Yes



5069-2
2 Drawer cabinet

Aluminum

14" D x 24" W x 12" H

150 lbs/drawer

36 lbs

0.5 hr

Yes



X50-B
Compact locking 2-Drawer cabinet

Steel

12.5" D x 18.5" W x 10.5" H

22 lbs/drawer

23 lbs

0.3 hr

Yes



X50-C
Compact locking 3-Drawer cabinet

Steel

12.5" D x 18.5" W x 10.5" H

22 lbs/drawer

24 lbs

0.3 hr

Yes



X51-F
Compact 9-Drawer cabinet

Steel

12" D x 17" W x 12" H

—

24 lbs

0.3 hr

Yes